	<b>COUNTY OF SACRAMENTO</b> EMERGENCY MEDICAL SERVICES AGENCY	Document #	7508.16
	<b>PROGRAM DOCUMENT:</b>	Initial Date:	02/28/94
	<b>Simple Triage and Rapid Treatment (START)</b> <b>JumpSTART Pediatric Triage</b>	Last Approval Date:	11/01/17
		Effective Date:	11/01/18
		Next Review Date:	07/01/20

\_\_\_\_\_  
 EMS Medical Director

\_\_\_\_\_  
 EMS Administrator

**Purpose:**

- A. ~~To define the mass casualty triage algorithm to be used in Mass Casualty Incidents (MCI) where standard prehospital triage would be inadequate to rapidly and effectively triage all patients.~~ **To serve as a procedure standard for rapid and effective triage of patients during a Mass Casualty Incident (MCI).**

**Authority:**

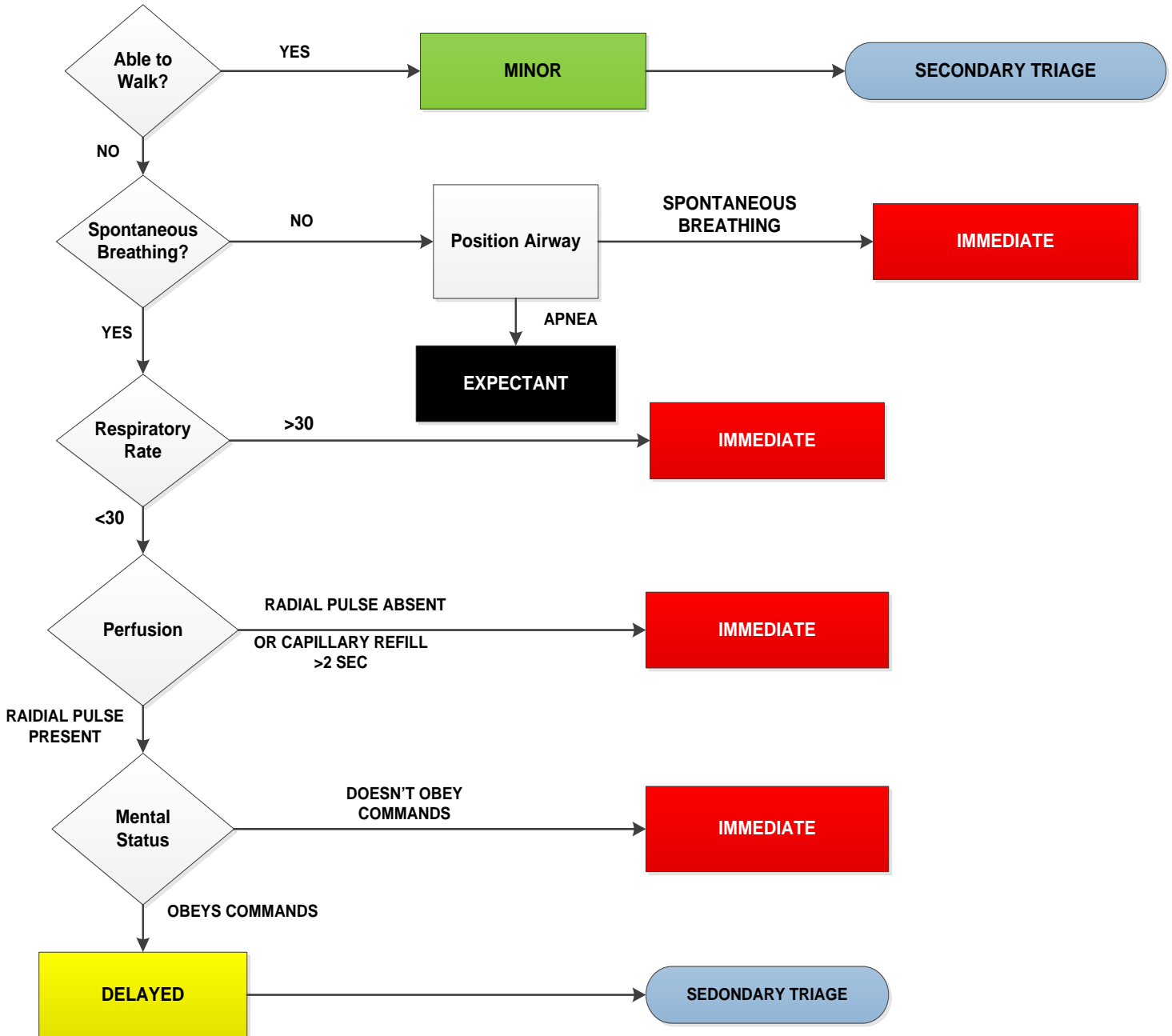
- A. California Health and Safety Code, Division 2.5
- B. California Code of Regulations, Title 22, Division 9

**Protocol:**

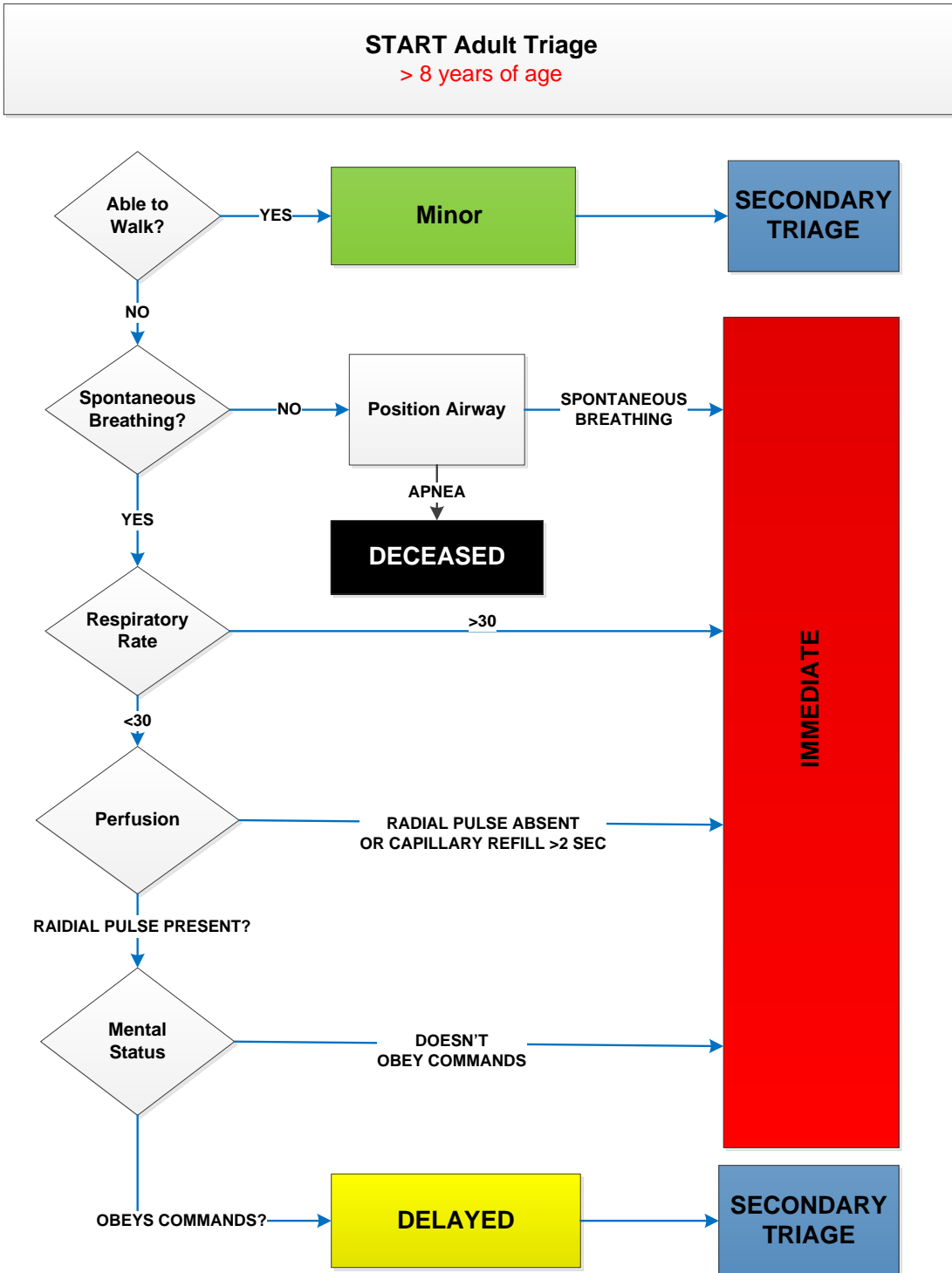
- A. The START and JumpSTART mass casualty triage algorithms noted below shall be utilized ~~as an initial triage scheme when an MCI has been declared~~, AND when standard field triage practices are insufficient to rapidly and effectively triage a large number of patients.
- B. Initial triage utilizing START/JumpSTART shall take 30 seconds or less per patient.
- C. Once all immediate patients have been assigned destination facilities, all delayed and minor patients shall receive secondary triage to determine if they meet trauma triage criteria. This information shall be reported to the Control Facility when seeking appropriate destination
- D. Secondary triage on delayed and minor patients may be abbreviated or eliminated ONLY when very large patient numbers would prevent timely distribution of patients to hospitals.

**OLD VERSION**

**Start Adult Triage**

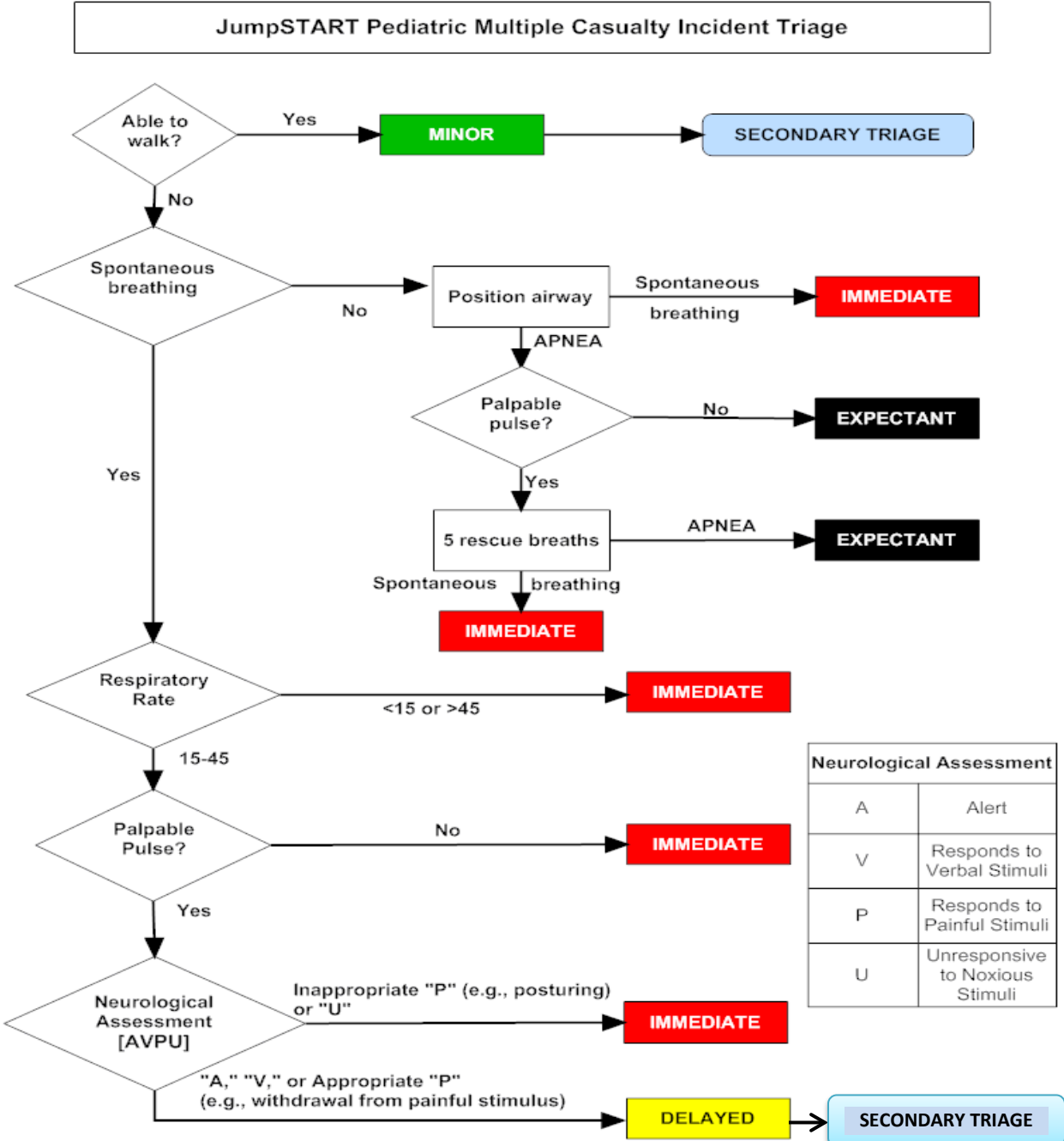


**NEW VERSION**



**OLD VERSION**

- A. For patients 1-8 years of age.
- B. If unable to determine age; if the victim appears to be a child, use JumpSTART
- C. If the victim appears to be a young adult, use START



Use JumpSTART if the Patient appears to be a child.

Use an adult system, such as START, if the patient appears to be a young adult.

**Cross Reference:** PD# 7500 Disaster Medical Services Plan

**NEW VERSION**

**JumpSTART Pediatric Mass Casualty Incident Triage**  
 For patients 1-8 years of age  
 If unable to determine age and the victim appears to be a child, use JumpSTART  
 If the victim appears to be a young adult, use START

