	COUNTY OF SACRAMENTO EMERGENCY MEDICAL SERVICES AGENCY	Document #	5053.18
	<u>PROGRAM DOCUMENT:</u> Trauma Triage Criteria	Initial Date:	12/15/93
		Last Approved Date:	11/01/15
		Effective Date:	05/01/18
		Review:	01/01/20

EMS Medical Director

EMS Administrator

Purpose:

To establish patient triage criteria and standards. This policy shall direct transportation of trauma patients to the closest, most appropriate level of trauma care.

Authority:

- A. California Health and Safety Code, Division 2.5
- B. California Code of Regulations, Title 22, Division 9

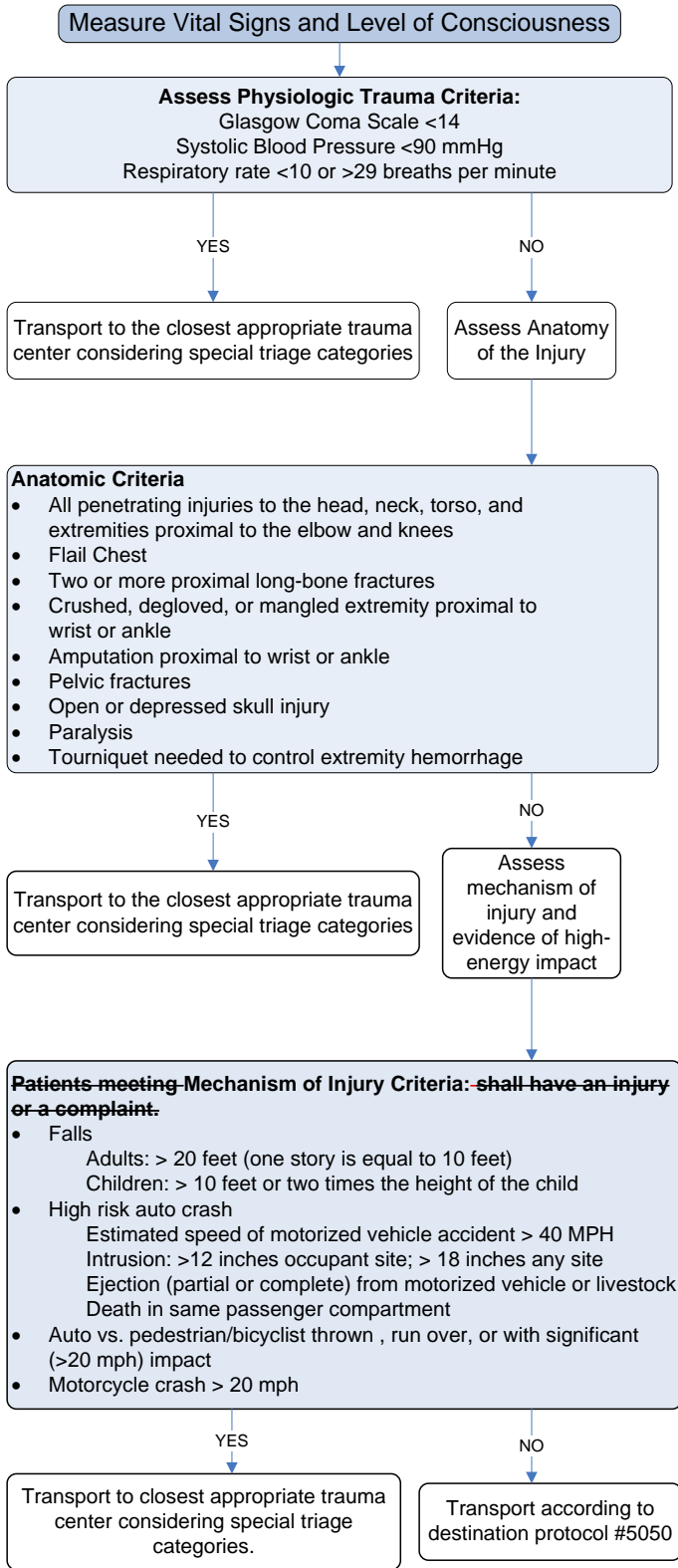
Application:

These criteria apply to any assessment by prehospital care personnel at the scene.

Protocol:

See Trauma Triage Criteria Algorithm (Page 2)

DRAFT



**SACRAMENTO COUNTY EMERGENCY MEDICAL SERVICES
TRAUMA TRIAGE CRITERIA**

SPECIAL CONSIDERATIONS WHEN TRIAGING CRITICAL TRAUMA

Any patient at the extremes of age (pediatric and adult) who has suffered an injury and/or where physical examination or assessment is difficult.

Critical Trauma Patients who do not meet physiological criteria with the following conditions will normally be transported to UCDMC:

- Traumatic amputations proximal to the wrist and/or the ankle
- Traumatic burns > 9% Total Body Surface Area
- Chemical or Electrical Burns
- Evidence of possible inhalation injury
- Any Burn to the face, hands, feet, genitalia, perineum or major joints

Patients less than fifteen (15) years of age will be transported to UCDMC if they meet any trauma triage condition with the following exceptions:

- Pediatric Critical Trauma patients with no effective established airway may be transported to the closest available facility.
- Traumatic Cardiopulmonary Resuscitation patients shall be transported to the time closest designated trauma center **regardless of age.**

LVAD patients who meet critical trauma criteria should be taken to UC Davis **regardless of age.**

Emergency Medical Service Provider Judgment:

Some patients not meeting clearly defined trauma triage criteria may still have a severity of injury warranting trauma center care. If the patient does not meet trauma center criteria but the Paramedic feels that trauma center care is still warranted, transport to a trauma center. (Document Reason)

Possible examples of such patients include:

- Patients taking anticoagulation medications, excluding aspirin, or a history of bleeding disorders.
- A clear history of loss of consciousness.
- Pregnancy > 20 weeks.

Cross Reference:
Trauma Destination, PD #5052
Destination, PD #5050