	COUNTY OF SACRAMENTO EMERGENCY MEDICAL SERVICES AGENCY	Document #	7508.14
	PROGRAM DOCUMENT:	Draft Date:	02/28/94
	Simple Triage and Rapid Treatment (START) JumpSTART Pediatric Triage	Effective:	11/01/16
		Revised:	06/17/16
		Review:	07/01/18

 EMS Medical Director

 EMS Administrator

Purpose:

- A. To define the mass casualty triage algorithm to be used in Mass Casualty Incidents (MCI) where standard prehospital triage would be inadequate to rapidly and effectively triage all patients.

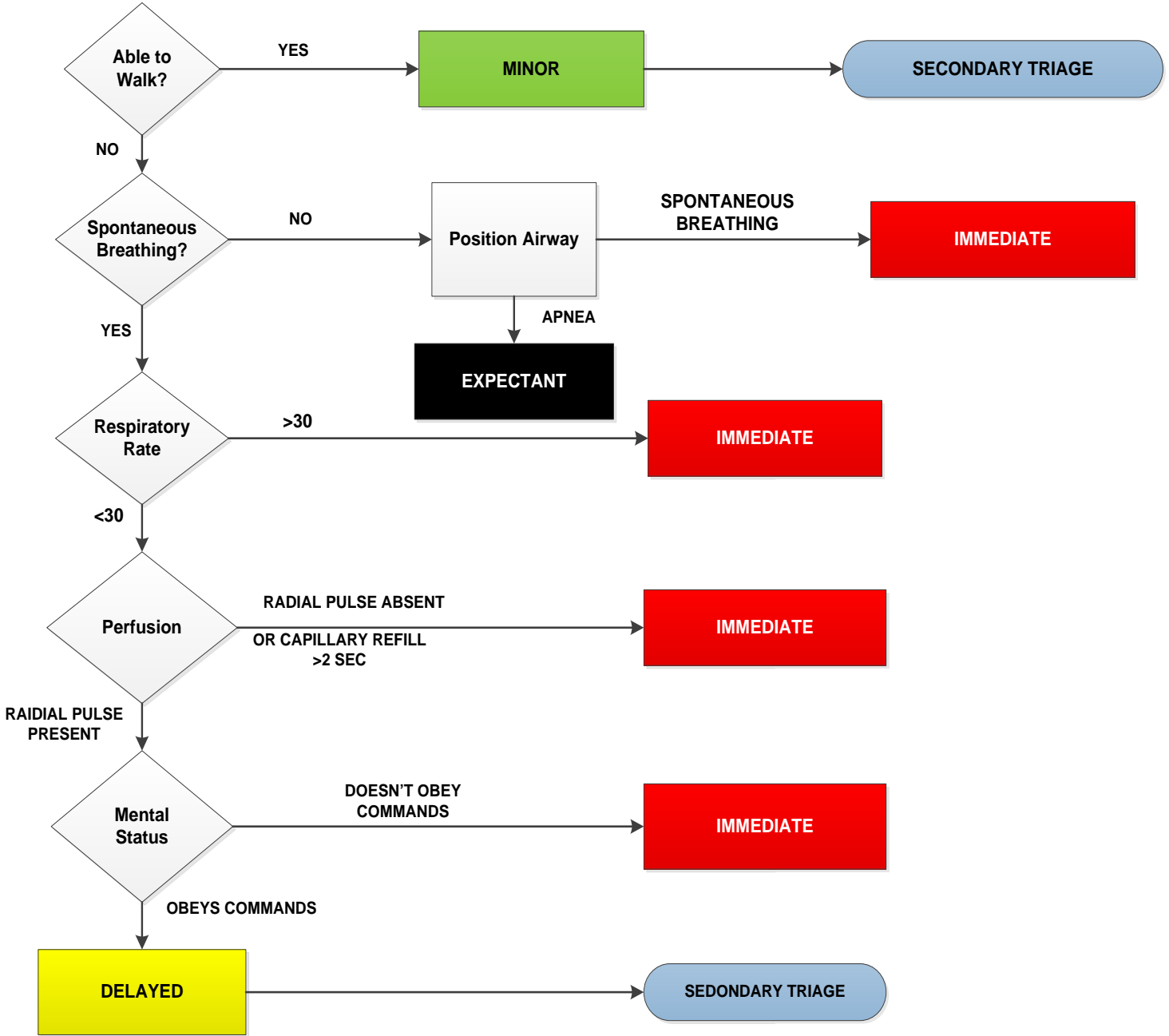
Authority:

- A. California Health and Safety Code, Division 2.5
- B. California Code of Regulations, Title 22, Division 9

Protocol:

- ~~A. Instruct all patients who are able to ambulate to move to a certain area — triage as minor.~~
- ~~B. For remaining patients:~~
 - A. The START and JumpSTART mass casualty triage algorithms noted below shall be utilized as an initial triage scheme when an MCI has been declared, AND when standard field triage practices are insufficient to quickly and effectively triage a large number of patients.
 - B. Initial triage utilizing START/JumpSTART shall take 30 seconds or less per patient.
 - C. Once all immediate patients have been assigned destination facilities, all delayed and minor patients shall receive secondary triage to determine if they meet trauma triage criteria. This information shall be reported to the Control Facility when seeking appropriate destination
 - D. Secondary triage on delayed and minor patients may be abbreviated or eliminated ONLY when very large patient numbers would prevent timely distribution of patients to hospitals.

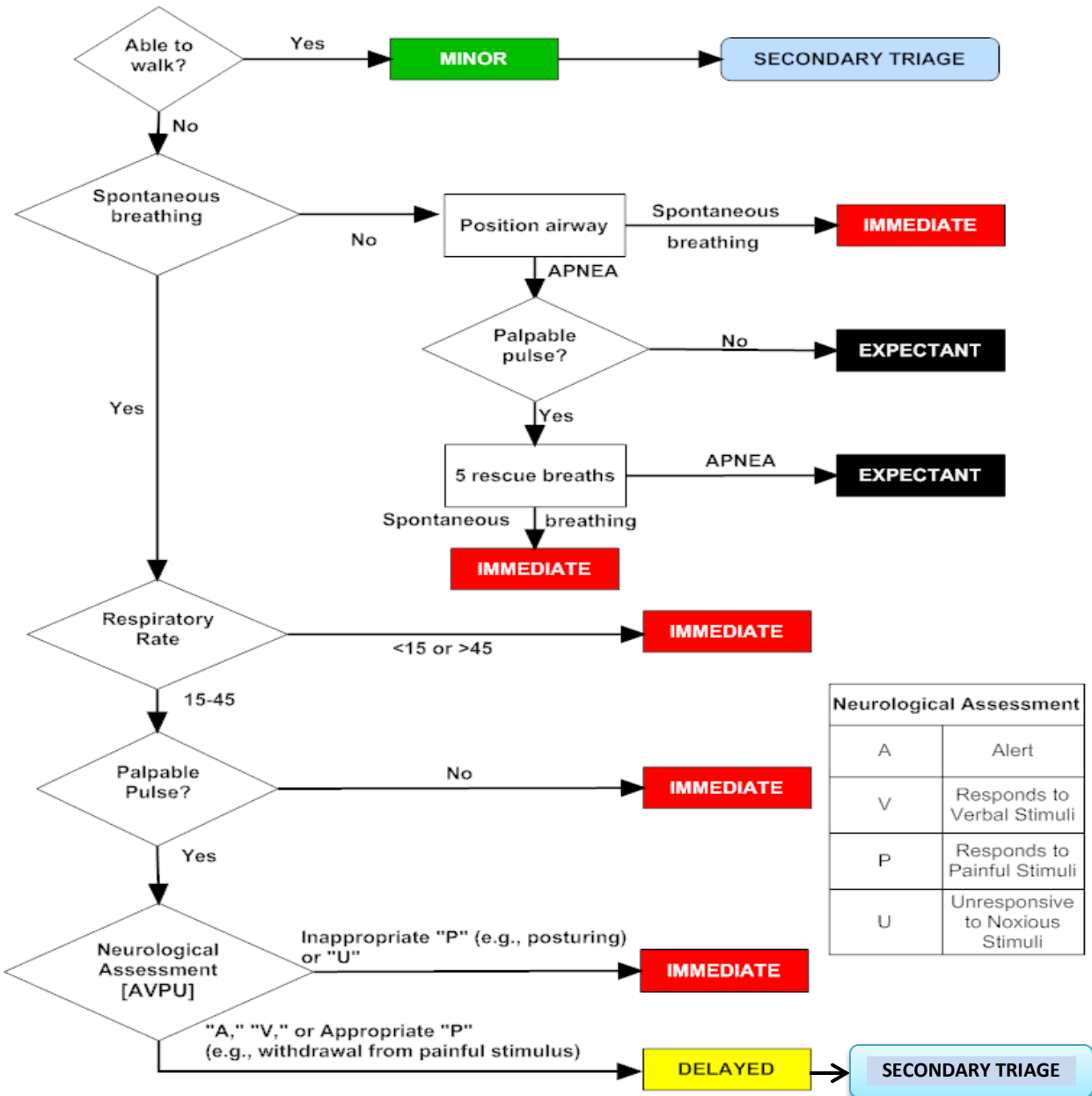
Start Adult Triage



NOTE: Once a patient reaches a triage level indicator in the algorithm, (i.e. IMMEDIATE TAG box), triage of this patient should stop and the patient should be tagged accordingly.

- A. For patients 1-8 years of age.
- B. If unable to determine age; if the victim appears to be a child, use JumpSTART
- C. If the victim appears to be a young adult, use START

JumpSTART Pediatric Multiple Casualty Incident Triage



Use JumpSTART if the Patient appears to be a child.

Use an adult system, such as START, if the patient appears to be a young adult.

Cross Reference: PD# 7500 Disaster Medical Services Plan