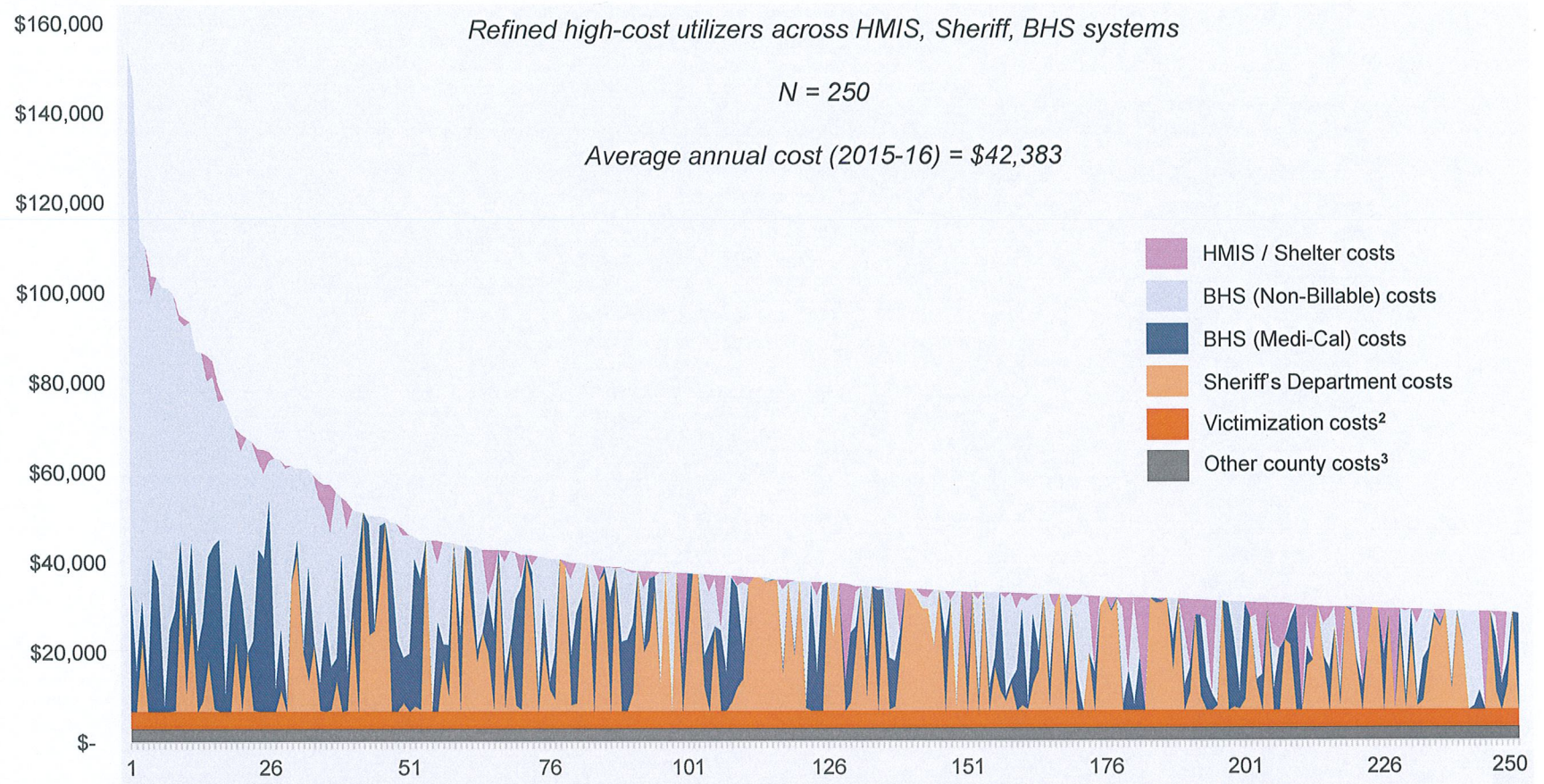


SUMMARY OF COST DISTRIBUTION ACROSS 250 HIGH-UTILIZING HOMELESS INDIVIDUALS IN SACRAMENTO COUNTY

Average annual cost to Sacramento County public systems across high-cost, PSH-fit 250 individuals (2015-16)¹

Dollars (N=250)



1. Average annual cost calculated by averaging individual costs across analyzed systems in 2015 and 2016. Note that cost estimates are not exhaustive. Notable omissions include physical healthcare (deprioritized in part due to limited expected County budget impact), correctional health costs, and any reflection of impact on economic development. While costs are primarily County focused, some (such as billable BHS costs) may be reflective of other jurisdictional budgets; in other analyses, such as cost-benefit analysis, these costs are removed. "PSH-fit" estimated by reviewing 2015-2016 HMIS records, excluding individuals with any days spent in permanent supportive housing over the past 12 months, as well as those lacking (non-PSH) HMIS interactions in last 12 months, and focusing on those with longer and more-acute needs exhibited by a chronically homeless flag in HMIS and/or a recorded VI-SPDAT score >14 and/or a history of homelessness greater than one year. 2. Average victimization cost based on estimates from McCollister et al. (The Cost of Crime to Society, 2010), intended to calculate the cost to society of various criminal acts, including both "tangible" costs (e.g., direct economic losses, property damage) and "intangible" costs (e.g., productivity loss, quality of life). Total victimization costs based on list of primary charges for top 250 population in 2015-16; for the sake of clarity (to smooth otherwise highly variable data), they have been averaged among this population, rather than applied to the relatively limited set of specific individuals to whom these victimization costs can be attributed. (Note that many charges, including most drug- and alcohol-related charges, do not incur a direct victimization cost.) 3. Assumes that high-utilizing homeless populations generate at least average costs to other County agencies. Includes non-specific core County costs (such as DHA – Admin, DHA – Aid Payments, Code Enforcement, Regional Parks, District Attorney) averaged across 2016 point-in-time count population. **Key sources:** Sacramento Steps Forward, Sacramento Sheriff's Department, Sacramento Behavioral Health Services, Sacramento City and County Cost of Homelessness Estimates, McCollister et al.